

BROWNSBURG HIGH SCHOOL



A Four-Star School

The Legacy of Brownsburg High School, a Foundation for the Future



Master Plan Workshop #3 Agenda

1. Review of Where We Are
Jim Snapp
Jim Schellinger
2. Quick Facts about BHS
Bret Daghe
3. Space Program for BHS
Bret Daghe
Rosemary Rehak
4. Existing Spaces at BHS
Bret Daghe
Rosemary Rehak
Andy McNeilly
5. Stakeholder Questions, Comments and Concerns



Community Outreach / Input Process

Highlights/Questions from Workshops 1 and 2



Community Outreach / Input Process

Master Plan Workshop No. 1 (Identification Phase)

Review of the academic and long term vision for high school programs and activities, and developing an understanding of stakeholder concerns.

Tuesday, October 1, 2013

6:30 P.M.

Master Plan Workshop No. 2 (Identification Phase)

Review and develop understanding for the history and existing conditions at the high school. The workshop will be followed by tours of the facility.

Wednesday, October 9, 2013

6:30 P.M.

Master Plan Workshop No. 3 (Evaluation Phase)

Review the long term space requirements and the facility needs of the high school to ultimately establish the scope of the master plan.

Wednesday, October 30, 2013

6:30 P.M.

Community Outreach / Input Process

Master Plan Workshop No. 4 (Evaluation Phase)

Develop consensus on long term space and facility needs of the high school

Wednesday, November 13, 2013

6:30P.M.

Master Plan Workshop No. 5 (Evaluation Phase)

Review previous consensus long term space and facility needs of the high school. Begin a review of concept site and building adjacency diagrams

Monday, January 6, 2014

6:30 P.M.

Master Plan Workshop No. 6 (Evaluation Phase)

Review conceptual site plans, floor plans and rendering options as well as order of magnitude cost estimates.

Monday, February 3 ,2013

6:30 P.M.

Community Outreach / Input Process

6:30 P.M.

Master Plan Workshop No. 7 *(Recommendation Phase)*

Develop consensus on master plan scope, quality and cost

Monday, March 3, 2013

6:30 P.M.

Master Plan Workshop No. 8 *(Implementation Phase)*

Develop consensus on master plan implementation phases

Monday, April 21, 2013

6:30 P.M.



Quick Facts about Brownsburg High School

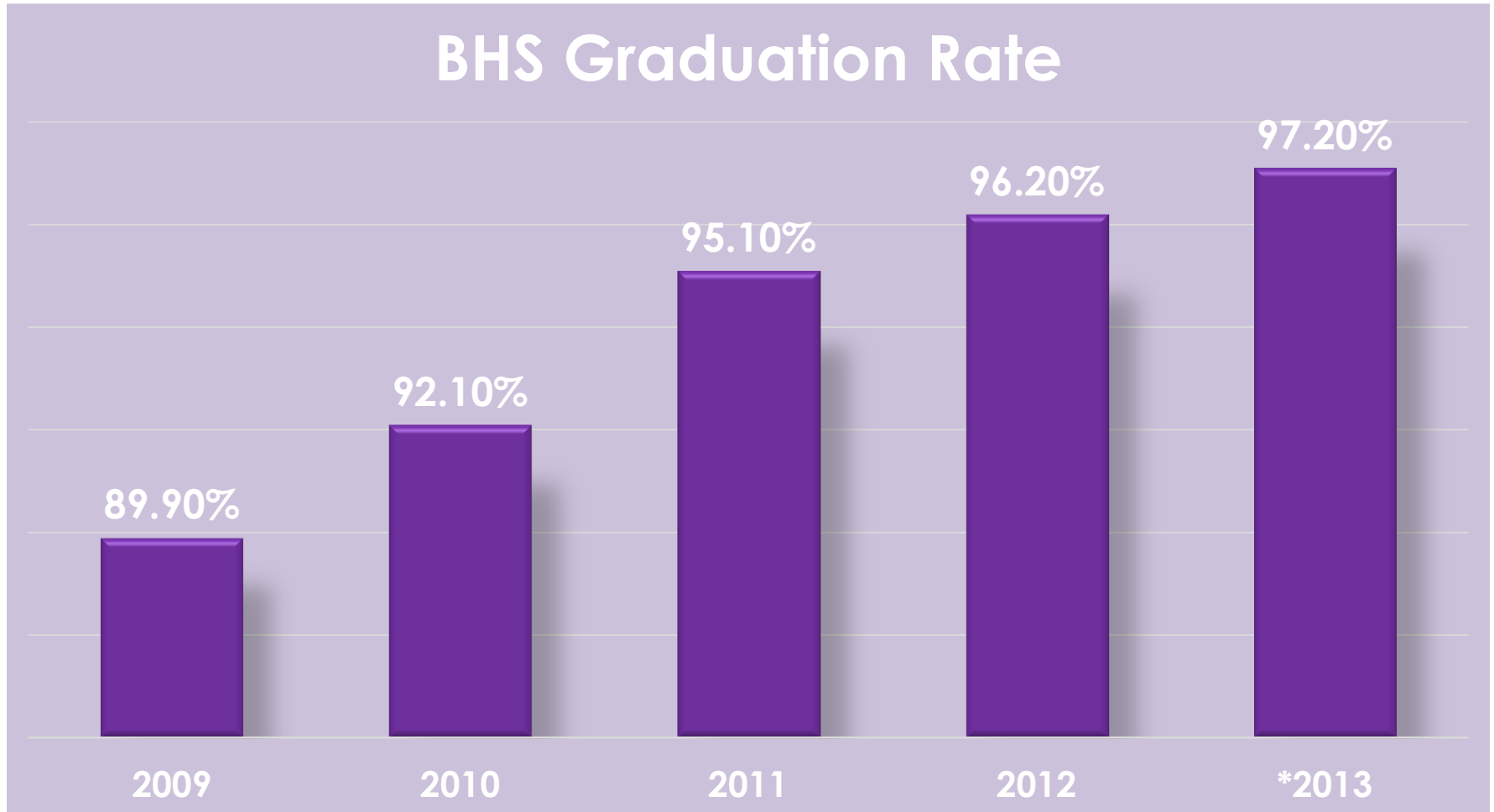
- 1971 Original Building
- 13 Additions
- 610,886 sq. ft. under roof
 - If an average home is 2,500 square feet, that means there is the equivalent of 244 houses under roof at BHS*
- 97 acres of outside fields and facilities to maintain



Brownsburg High School



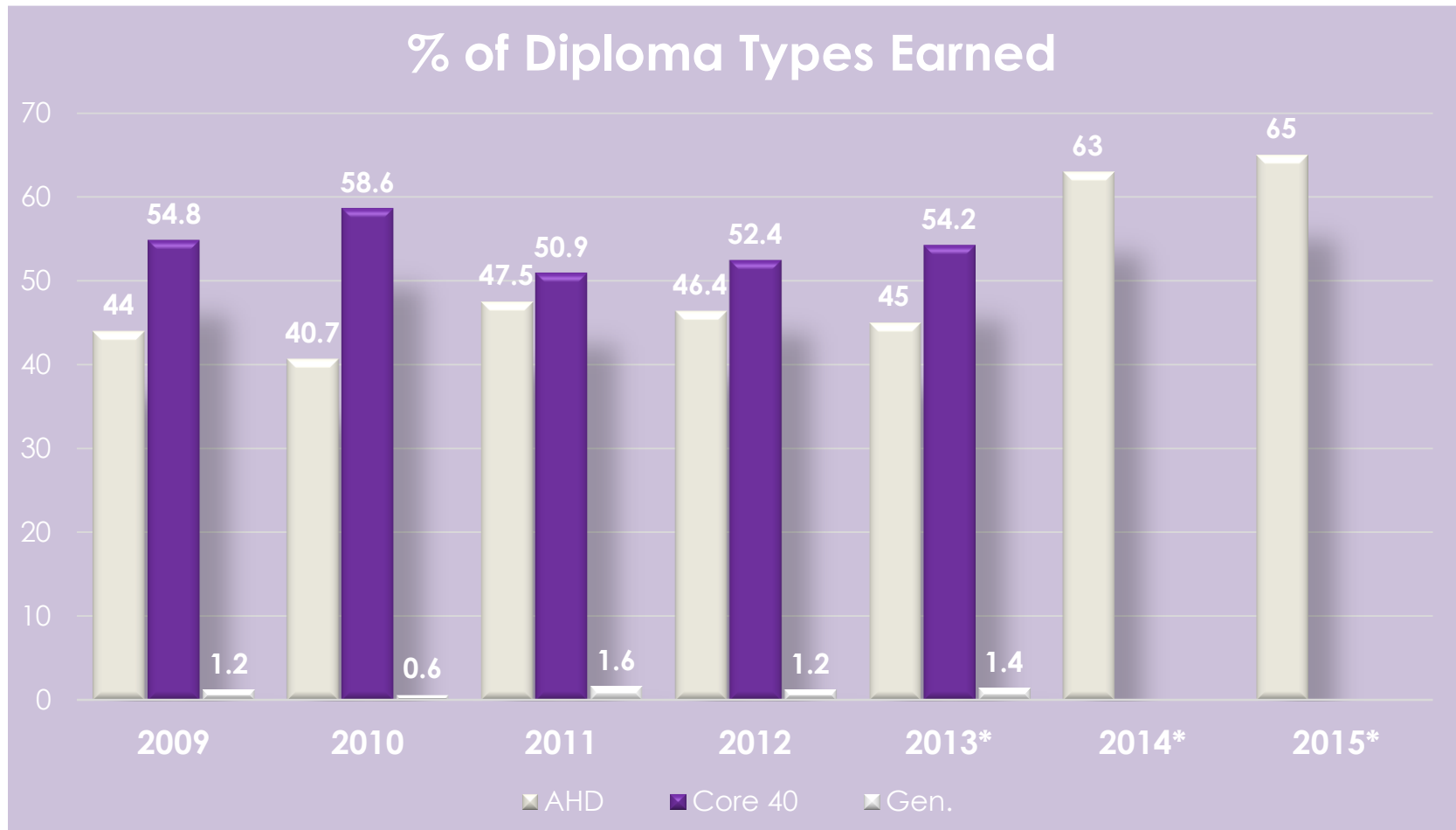
Graduation Rate Trends



The Legacy of Brownsburg High School, a Foundation for the Future



Diploma Type Breakdown

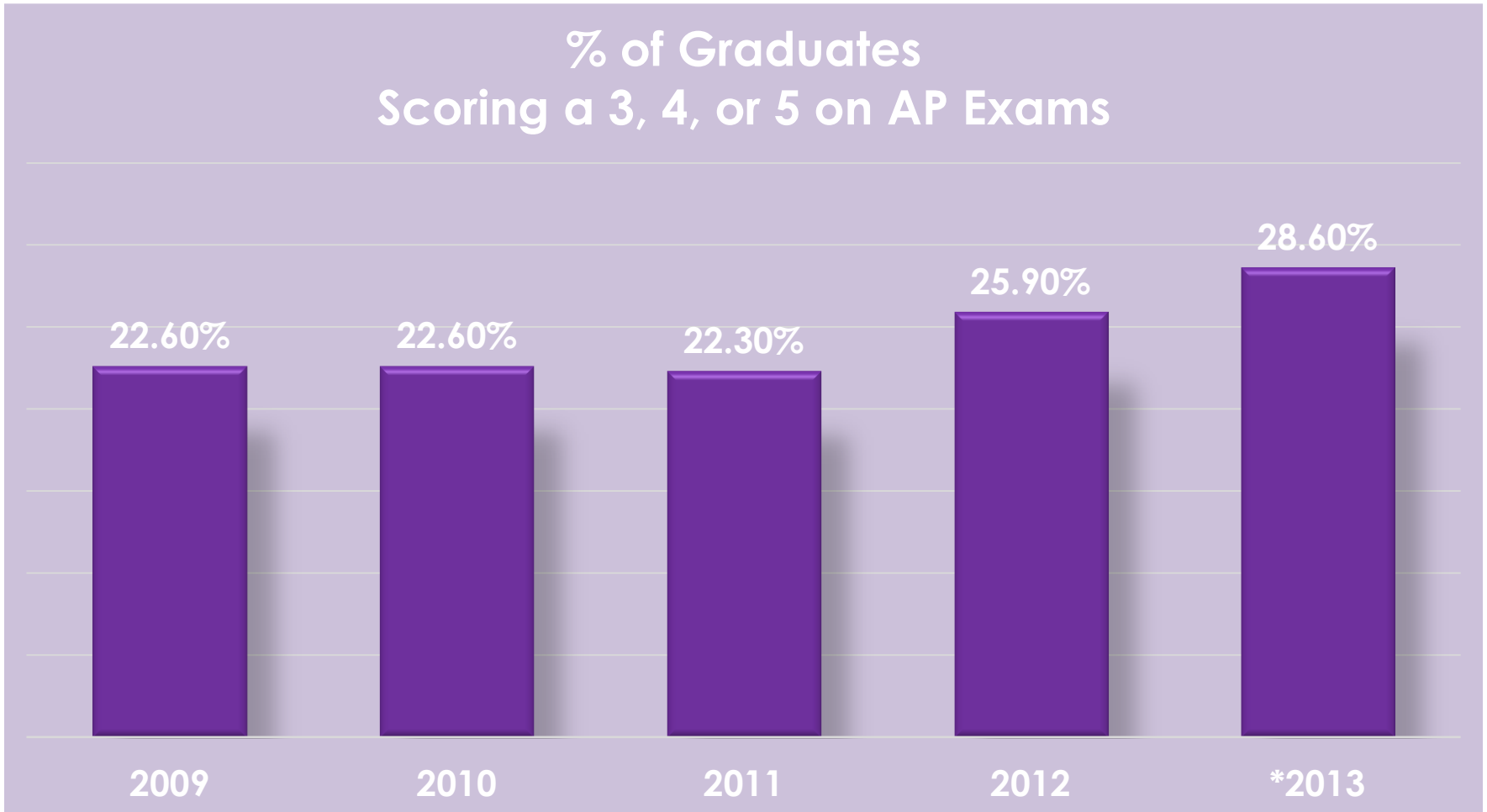


The Legacy of Brownsburg High School, a Foundation for the Future



AP Data Trends

% of Graduates
Scoring a 3, 4, or 5 on AP Exams



The Legacy of Brownsburg High School, a Foundation for the Future



AP Data Trends Continued

	Brownsburg	State	Global
	Passing Scores (3s, 4s, or 5s)	Passing Scores (3s, 4s, or 5s)	Passing Scores (3s, 4s, or 5s)
2007	58.3%	52.6%	59.1%
2008	56.3%	51.4%	57.7%
2009	61.4%	48.5%	59.0%
2010	56.3%	42.7%	58.1%
2011	49.0%	44.7%	58.1%
2012	56.7%	46.6%	59.3%
2013	65.8%	49.2%	58.9%

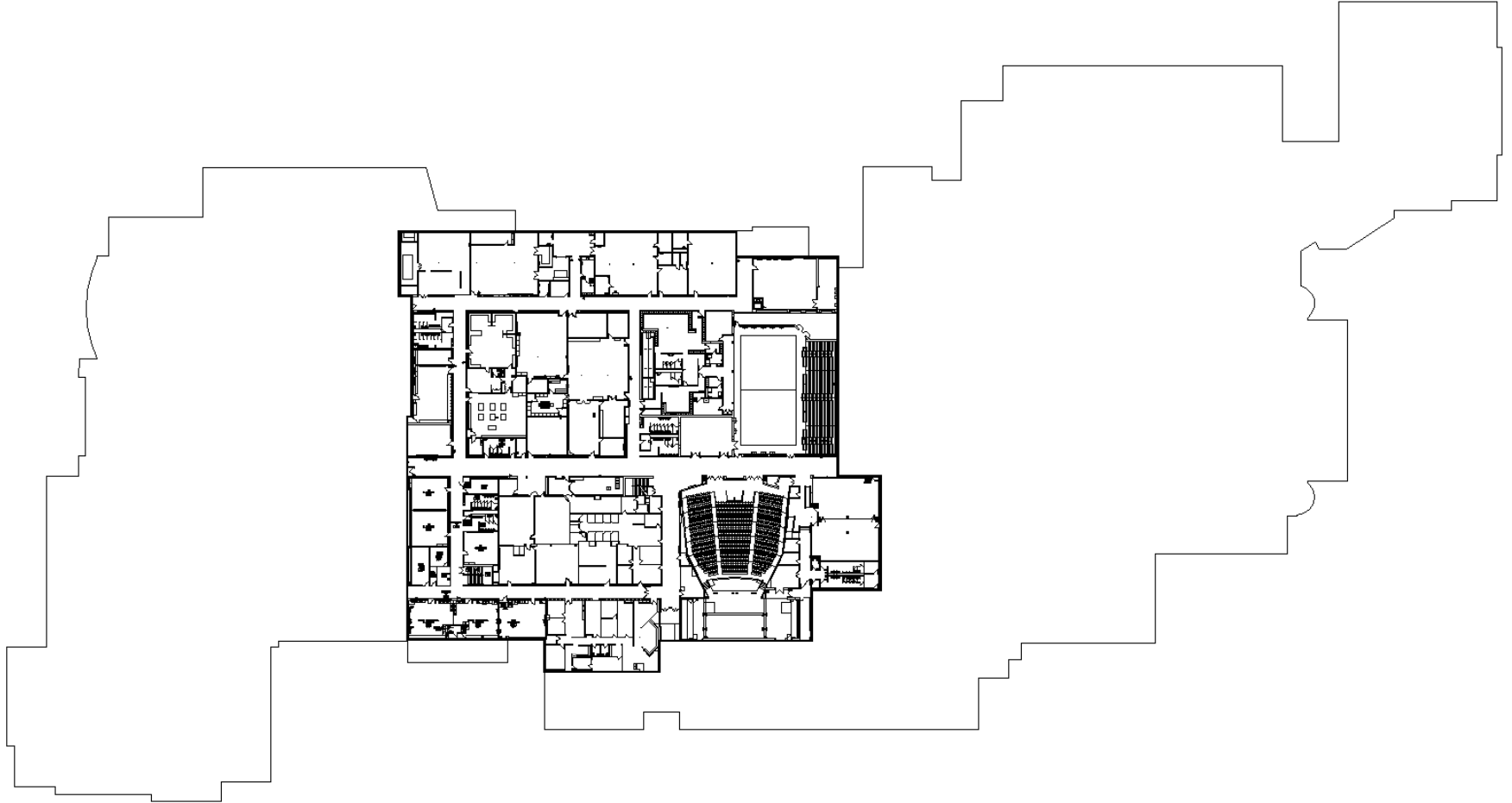
National Student Recognition

School Year	# of AP Scholars	Average Score
2010 - 2011	58	3.38
2011 - 2012	82	3.61
2012 - 2013	111	3.80

The Legacy of Brownsburg High School, a Foundation for the Future



1971 Original Building



The Legacy of BHS, A Foundation for the Future

“Heart of BHS” 1971 - Present

- Old Cafeteria
- Old Media Center
- Auto Shop
- Special Ed classrooms built for small groups
- Lecture Hall
- Outdated Science Labs
- Outdated Production Labs
- Narrow Hallways

Future “Heart of BHS” – meeting the needs of the 21st century learner

- PLTW Wing (Engineering & Biomedical Sciences)
- Re-organization of Special Education Rooms
- Culinary Arts re-organization
- Business department room structure
- Lab for TV Broadcasting/Yearbook/News paper
- Reorganization of Team offices
- More space for students to travel safely and more efficiently

BHS Vision of the Renovation

A Facility Designed for Preparing Students for Future Success

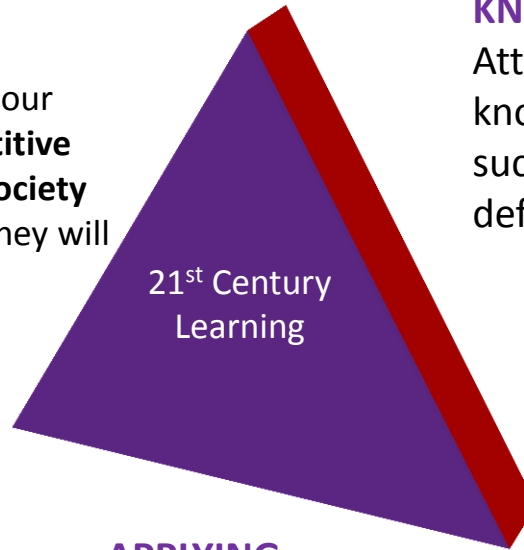
What is 21st Century Learning?

21st Century Learning is prepares our students to **succeed** in the **competitive global economy** and **democratic society** and to tackle the **complex issues** they will inherit.

CREATING

Applying basic knowledge to the known environment by problem solving, working in teams, and communicating effectively.
(the “**how**”)

- Laboratory applications
- Problem solving
- Project based
- Testing and presenting ideas, concepts & application



APPLYING

The life-long ability of finding new knowledge and applying it to the current, known environment as well as an uncertain and ever evolving future environment.
(the “**why**”)

- Access to global information and research
- Real life applications of knowledge and creativity
- 24/7 Learning Opportunities

KNOWING

Attaining and capturing the basic knowledge necessary for ultimate success in society as it’s currently defined. (the “**what**”)

- Traditional classroom setting with flexible groupings
- Digital Literacy
- Access to latest research

BHS Senior Academy Facility Vision

Vision: Brownsburg Senior Academy Cadre graduates are skilled, self-directed, and analytical thinkers who are prepared to compete and collaborate in a technical, global society. The graduates are leaders in personal, community and workplace environments.

- ▣ Innovative learning environment
- ▣ Technology-based education
- ▣ Project-oriented learning
- ▣ Career-focused education planning
- ▣ Student-leadership focus



“A facility designed for preparing students for future success”

BHS Vision of the Renovation

Our vision is to provide students with a safe, secure, innovative learning environment where they will become responsive, resilient and personally successful in evolving career settings.

- We will foster professional development, teacher collaboration, and teacher input to attain maximum achievement for our students and school.
- We will provide technology training for all students, faculty and administrators so that technology is integrated into all teaching and learning and that all understand the ethical and legal use of technology in today's world. We will embed opportunities for students and teachers to access and use advancing technology.
- We will promote effective learning through effective teaching.

Space Requirements to meet the Vision for BHS (Programmed Space for Future Capacity)

2001 Enrollment	1,408
2011 Enrollment	2,176

Approximately a 47.5% increase.

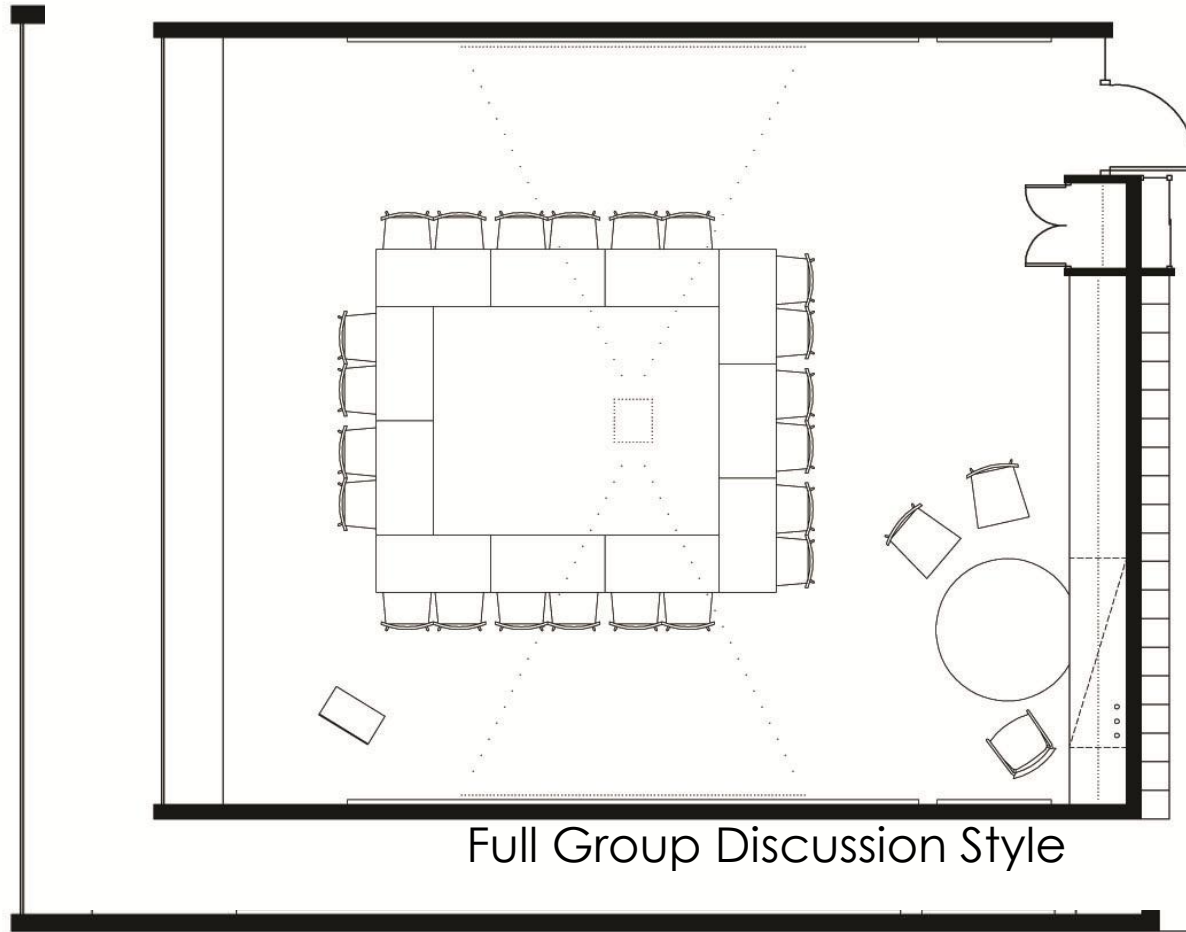
2013 Enrollment	2,302
2023 at 40%	3,222



Space Requirements to meet the Vision for BHS (Key Issues in Addition to Programmed Space)

1. Safety and Security – Hallways are overcrowded.
Additional, wider pathways needed
2. Plans for standard classroom technology and one-to-one computing
3. Flexible
4. More practical application/lab space
5. More distributed, independent/collaborative work space
6. Larger support spaces (cafeteria, auditorium)
7. More open, collaborative spaces for teachers and staff
8. Daylight
9. Welcoming

Flexibility



Space Requirements to meet the Vision for BHS (Key Issues in Addition to Programmed Space)

1. Safety and Security – Hallways are overcrowded.
Additional, wider pathways needed
2. Plans for standard classroom technology and one-to-one computing
3. Flexible
4. More practical application/lab space
5. More distributed, independent/collaborative work space
6. Larger support spaces (cafeteria, auditorium)
7. More open, collaborative spaces for teachers and staff
8. Daylight
9. Welcoming

Space Requirements to meet the Vision for BHS (Proposed Program for Main Building)

Space Description	Count	Sq Ft. (each)	Sq. Ft. (Total)	Teaching Stations
General Classrooms (includes Science)	96	900	86,400	96
Dedicated Science Labs	3	Varied	6,000	
Project Lead the Way Studios	6	700	4,200	6
Project Lead the Way Production Lab	1	2,500	2,500	
Media Production Lab	1	2,500	2,500	1
Art Studios	4	1,400	5,600	4
Culinary Arts Lab	1	2,500	2,500	1
Independent Living Lab	1	1,200	1,200	1
Special Education	6	Varied	6,100	6
Performing Arts Classrooms	6	Varied	11,470	6
Physical Education Facilities	4	Varied	90,385	4

Space Requirements to meet the Vision for BHS (Proposed Program for Main Building)

Space Description	Count	Sq Ft. (each)	Sq. Ft. (Total)	Notes
Computer Labs	2	1000	2,000	1 per floor
Lecture Hall	1	2500	2,500	
LGI	1	3,000	3,000	
Auditorium	1	15,790	15,790	Seats for 1,200
Library/Media Center	1	10,900	10,900	Includes small group and computer rooms
Student Resource Areas	3	1,200	3,600	
Teacher Office Areas	5	1,000	5,000	
Cafeteria/Kitchen	1	21,200	21,200	
Administration and Clinic		Varied	10,125	



Space Requirements to meet the Vision for BHS (Proposed versus Current)

Space Description	Proposed Count	Proposed Sq. Ft.	Current Count	Current Sq. Ft.
General Classrooms (includes Science)	96	86,400	75	64,740
Dedicated Science Labs	3	6,000	0	0
Science Classroom Labs	0	0	14	15,850
Project Lead the Way Studios	6	4,200	3	5,850
Project Lead the Way Production Lab	1	2,500	0	0
Media Production Lab	1	2,500	1	1,800
Art Studios	4	5,600	4	6,100
Culinary Arts Lab	1	2,500	1	1,500
Independent Living Lab	1	1,200	1	1,500
Special Education	6	6,100	6	5,645
Performing Arts Classrooms	6	11,470	6	11,470
Physical Education Facilities	4	90,385	4	88,515



Space Requirements to meet the Vision for BHS (Proposed versus Current)

Space Description	Proposed Count	Proposed Sq. Ft.	Current Count	Current Sq. Ft.
Computer Labs	2	2000		Included in Library and Classroom Counts
Lecture Hall	1	2,500	1	1,400
LGI	1	3,000	1	3,000
Auditorium	1	15,790	1	8,980
Library/Media Center	1	10,900	1	16,330
Student Resource Areas	3	3,600	0	
Teacher Office Areas	5	5,000	5	1,644
Cafeteria/Kitchen	1	21,200	2	19,436
Administration and Clinic		10,125		10,008

Space Requirements to meet the Vision for BHS

Other Areas Included in Building

- Corridors & Stairways
- Restrooms
- Lockers
- Storage
- Mechanical, Electrical, Plumbing Systems
- Custodial Supplies
- Custodial Closets
- Receiving and Storing
- Lobby/Display /Ticketing
- Concessions
- Elevators

Stakeholder Questions, Suggestions, and Concerns



Master Plan Workshop No. 4
**Developing Consensus on Space and
Facility Needs**

Wednesday, November 13, 2013
6:30 P.M.

